

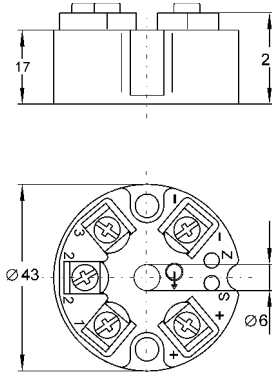
**Product Information**

**Temperature**

**Head Transmitter T19**



**Dimensions**



**Characteristics**

The transmitter T19 makes the field-mounting in the head of a RTD temperature sensor with DIN-head, possible. The current output guarantees a trouble free signal transmission over long distances. Different measuring ranges are configurable by internal links.

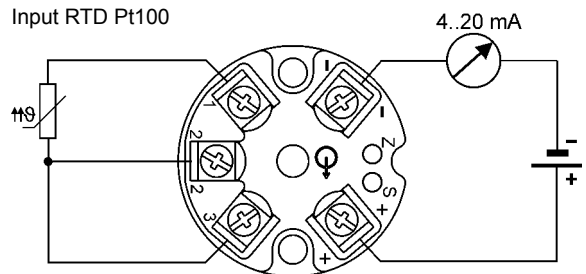
**Technical data**

- Supply voltage : loop powered
- Operating temperature : -40..+85 °C
- relative humidity : < 95 % without condensation
- acc. to DIN IEC 68-2-30 Var.2
- Vibration : 10..2000 Hz, 5 g DIN IEC 68-2-6
- Shock : acc. to DIN IEC 68-2-27 g<sub>n</sub> = 15
- CE - conformity : EN50 082-2
- Input** : Pt100, DIN IEC 751 2- or 3-wire
- Measuring range : -50..+400 °C
- Temperature coefficient : ± 0.2 K / 10 Ohm, 3-wire
- Max. line resistance : 30 Ohm each line, 3-wire, symmetric
- 0-point adjustment (Z) : type 1P0-1 ±10 °C  
 type 1P0-2 ±25 °C  
 type 1P0-3 ±30 °C
- End-value adjustment(S) : approx. 10 % of the end-value
- Output** : 4..20 mA, loop powered
- Accuracy : ± 0.5 %
- Linearisation error : ± 0.1 %
- Circuit error indication
- Broken line : output current < 3 mA
- Cross fault : output current < 3 mA
- Burden : RA ≤ (U<sub>B</sub> - 10 V) / 0.02 A
- Case**
- Material : Polyamide, with fiber glass
- Weight : approx. 30 g
- Connection : screw terminals, 0.14..1.5 mm<sup>2</sup>
- Protection class : case IP50, terminals IP 00

**Measuring ranges and code for factory configuration**

Pt100 [°C] (Code XX for ordering code field 3)					
Type 1P0-1	Code (XX)	Type 1P0-2	Code (XX)	Type 1P0-3	Code (XX)
-50..+50	EA	-50..+200	EL	-30..+30	CA
0..50	1A	0..200	1L	-30..+50	CB
0..100	1E	0..250	1M	0..60	1C
0..120	1F	0..300	1N	0..80	1D
0..150	1H	0..350	1P	0..100	1E
0..200	1L	0..400	1Q	0..120	1F

**Connection diagram**



**Ordering code**

1. 2. 3.  
 T19-10-  0 -  -

<b>1. Measuring input</b>	
1P	Pt100
<b>2. Measuring range</b>	
1	Pt100, -50..+200 °C configurable
2	Pt100, -50..+400 °C configurable
3	Pt100, -30..+120 °C configurable
<b>3. Factory configuration</b>	
NK	without
XX	see table for code